

**NOTES:**

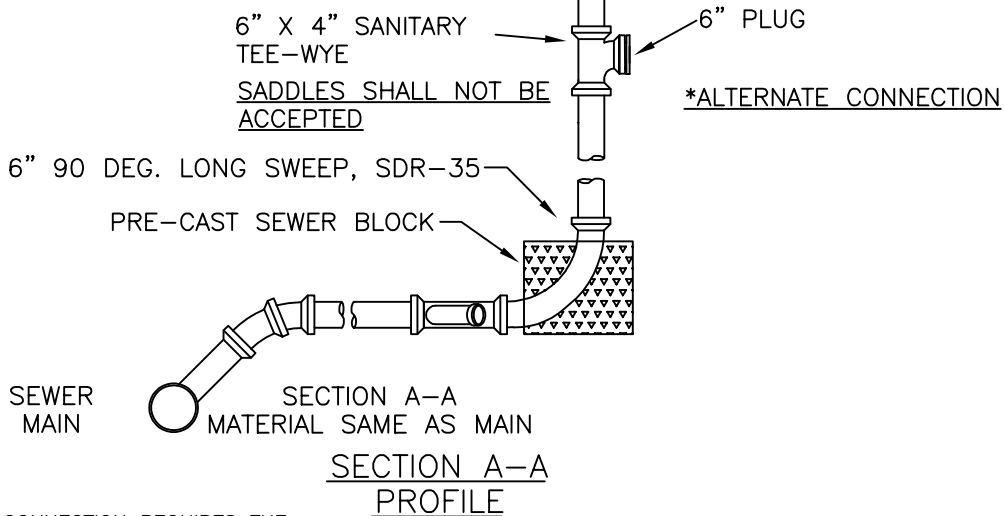
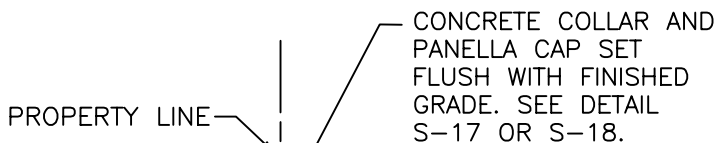
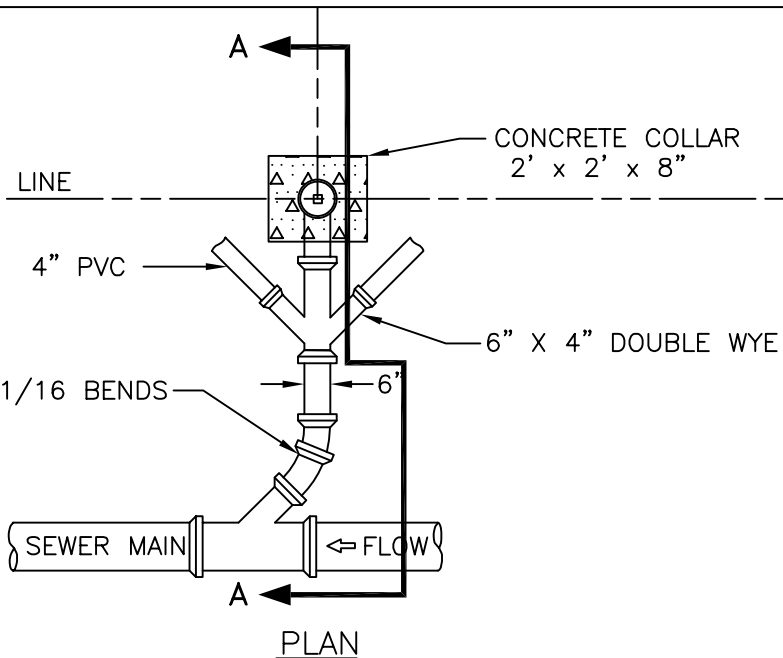
PRE-CAST SEWER BLOCK SHALL BE USED ON LONG SWEEP OR VERTICAL WYE

PLUGS SHALL BE SUFFICIENTLY BLOCKED TO WITHSTAND AIR OR WATER TEST

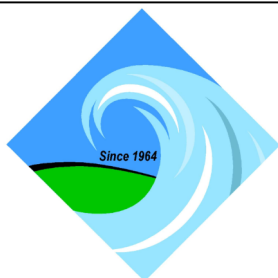
SERVICE LATERAL SHALL HAVE A MINIMUM SLOPE OF NO LESS THAN 2%

SERVICE LATERAL SHALL NOT EXCEED 100 FEET IN LENGTH BETWEEN CLEANOUTS

ADDITIONAL CLEANOUT(S) WHEN REQUIRED SHALL BE CONSTRUCTED IN THE SAME MANNER AS THE SERVICE CONNECTION SETTING.



\*ALTERNATE CONNECTION REQUIRES THE PRIOR APPROVAL OF THE ENGINEER



**APPROVED**

*M. C. Hollander*

M. C. HOLLANDER, P.E.  
CHIEF ENGINEER

DATE: 7/11/19

**REVISIONS**

DATE	INITIALS
5/2/08	J.E.C.
1/8/19	J.E.C.

ST. MARY'S COUNTY  
METROPOLITAN COMMISSION  
STANDARDS FOR PUBLIC WATER, SEWER  
AND INCIDENTAL STRUCTURES

SEWER SERVICE CONNECTION  
TWIN SETTING  
(RETROFIT ONLY)

**STANDARD NO. S-11**